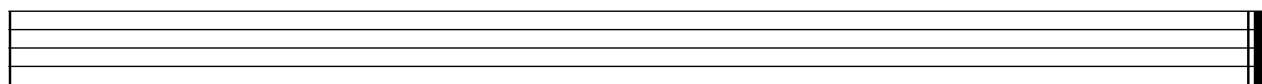


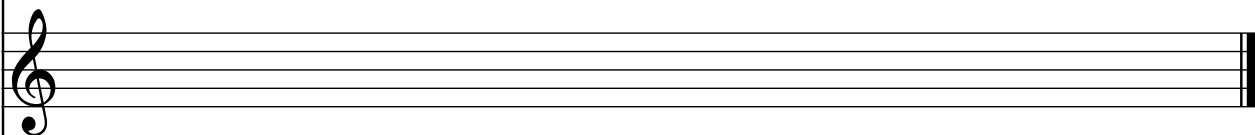
Musical Terms

Music is written on 5 lines and 4 spaces, known as the “staff”. These lines and spaces have no value at all unless there is a “clef” placed at the beginning. The “Treble or G Clef” is used in bagpipe music. This is the same clef as the piano, clarinet, trumpet and guitar. When the Treble Clef is placed on the staff, it gives value to the lines and spaces. The lines from the bottom up are **E G B D F**. If you remember “**Every Good Bagpiper Does Fingering**” you’ll remember the lines. The Spaces spell the word **F A C E** from the bottom up. The **Bagpipe Scale only has 9 notes** starting with Low G and going up to High A. The higher the note on the staff, the higher the pitch or sound.

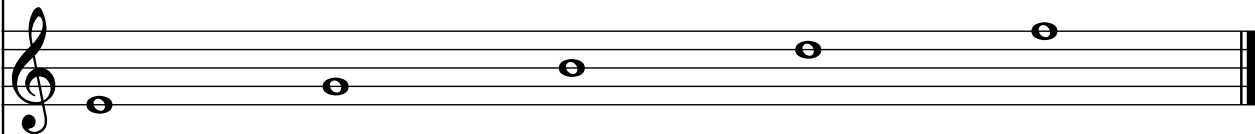
The Staff



The Treble Clef, making this the Treble Staff.

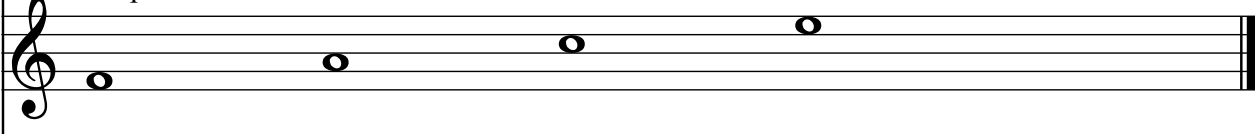


The Lines



E G B D F

The Spaces



F A C E

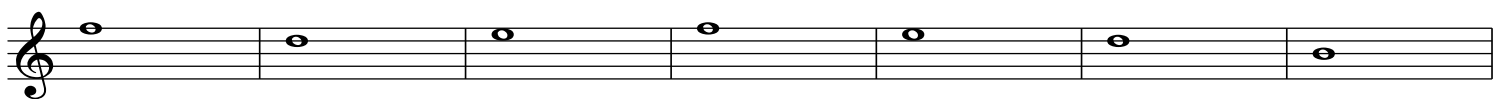
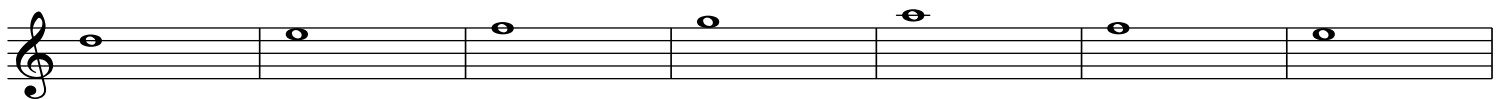
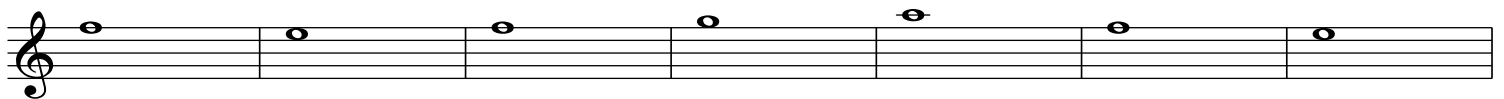
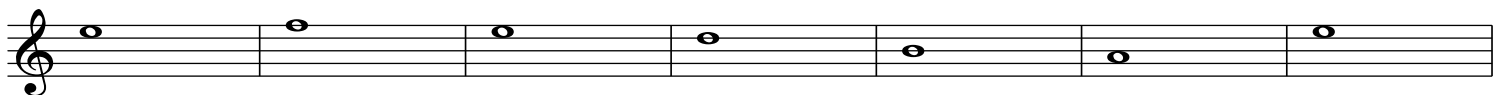
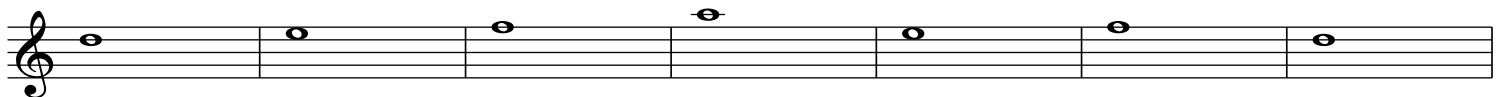
The Bagpipe Scale



lowG lowA B C D E F hiG hiA

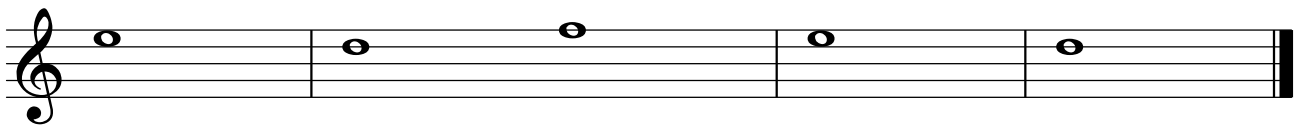
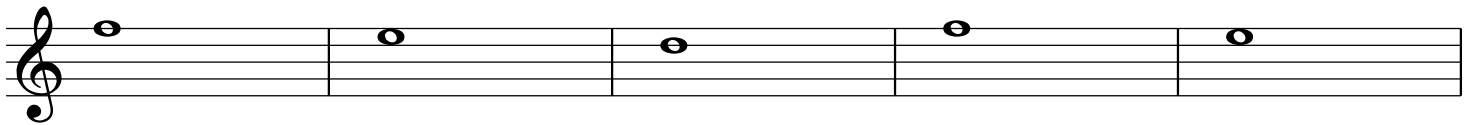
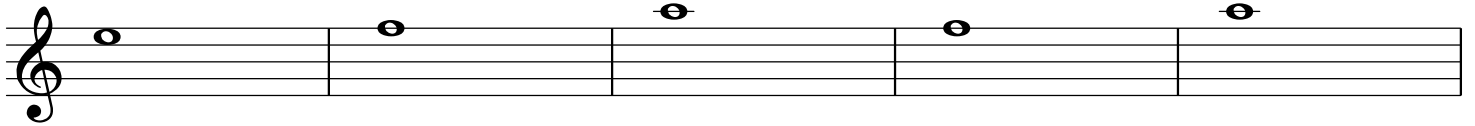
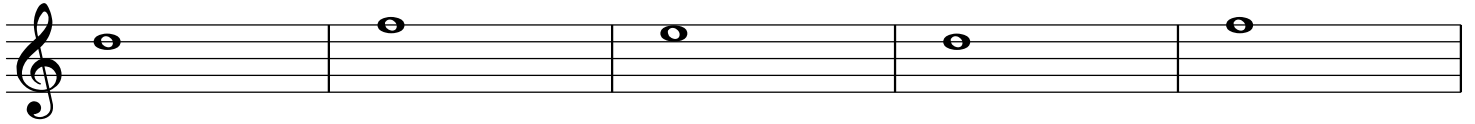
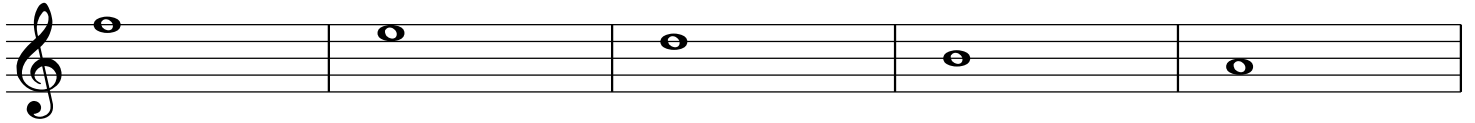
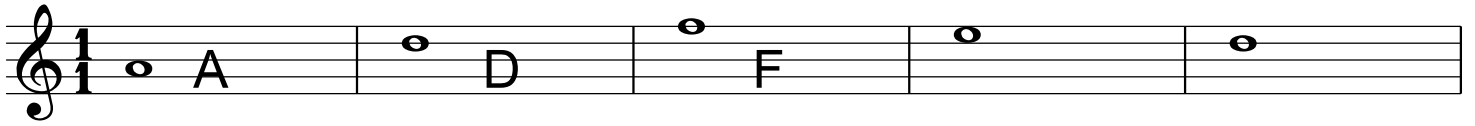
Using the Fingering Chart as a guide, write in the letter for Notations 1, 2 & 3 in the same manner as the examples below, next to the notes.

Notation Exercise Number 1



Notation Exercise Number 2

<Name>



Notation Exercise 3

